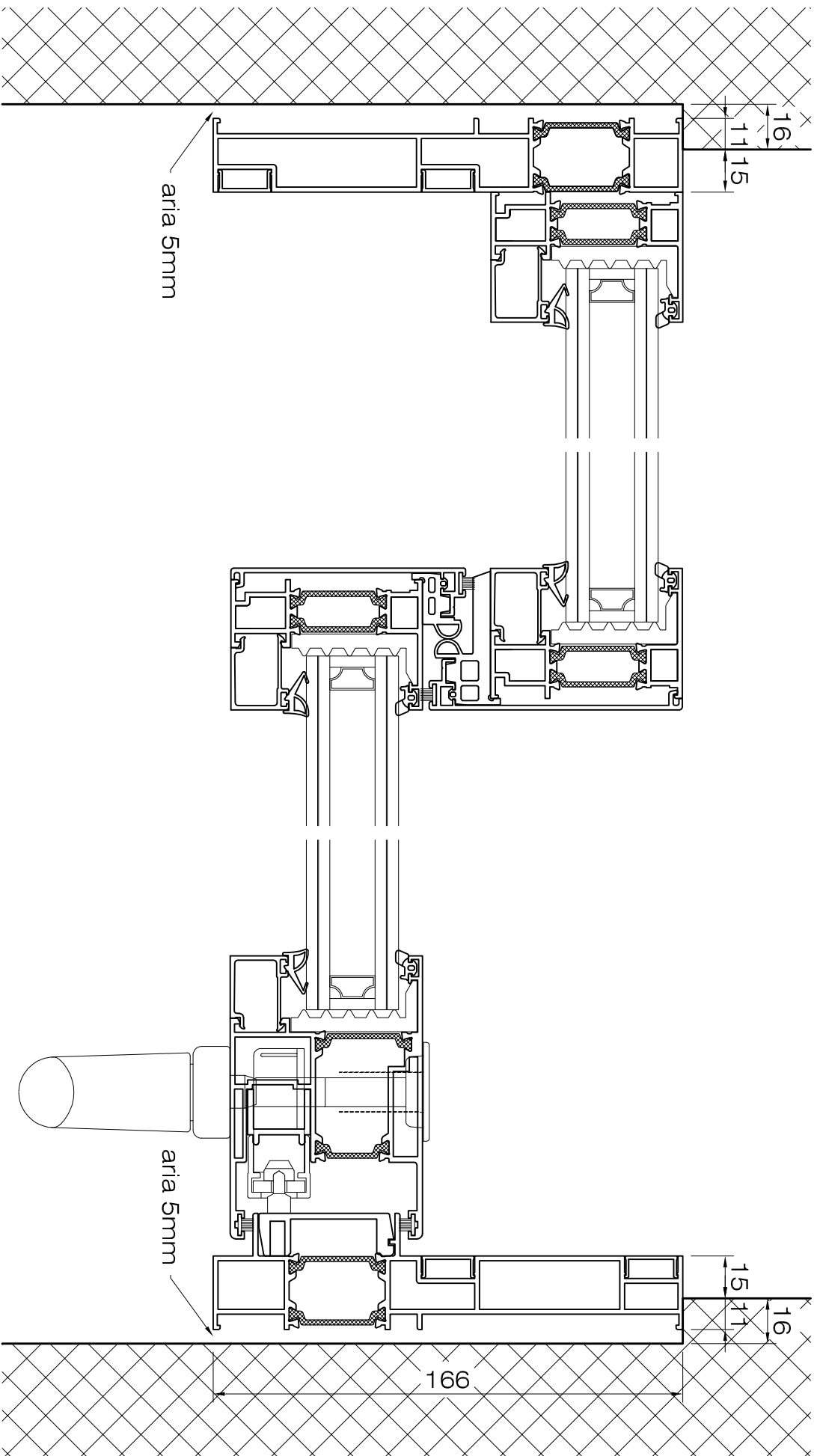


Profilo Termika TK165.CS
1 anta scorrevole alzante e 1 vetro fisso
sezione orizzontale 1:2



Info@ustfa.ch - www.ustfa.ch

tel. 091 858 00 69
fax 091 858 00 70

COOPERATIVA FALEGNAMERIE ASSOCIATE
via ai Ciöss - cp 155
6593 Cadenazzo